

# TORUS 3000 VERTICAL

## Category II or Category IV Appliance

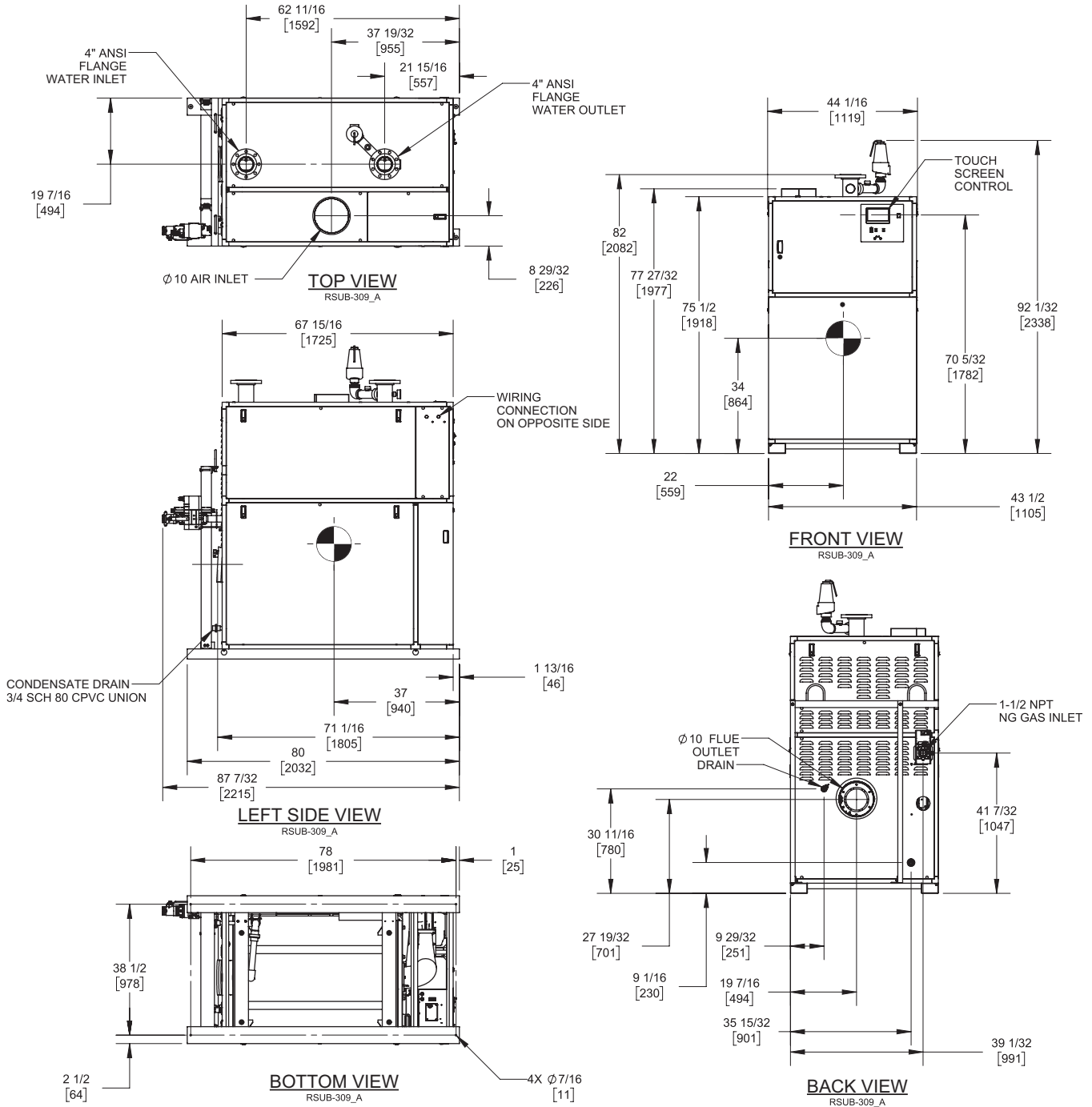
(see Installation and Operation Manual for venting information)

## CODE OPTIONS

CSD-1

FIRMWARE W/REMOTE TEST  
MANUAL RESET LWCO

## INDOOR UNIT



### Notes:

1. Dimensions are approximate and should not be used to "rough-in" equipment.
2. Dimensions are subject to change without notice.
3. All dimensions are in inches (mm).
4. Symbol indicates center of gravity.

# TORUS 3000 VERTICAL

## Category II or Category IV Appliance

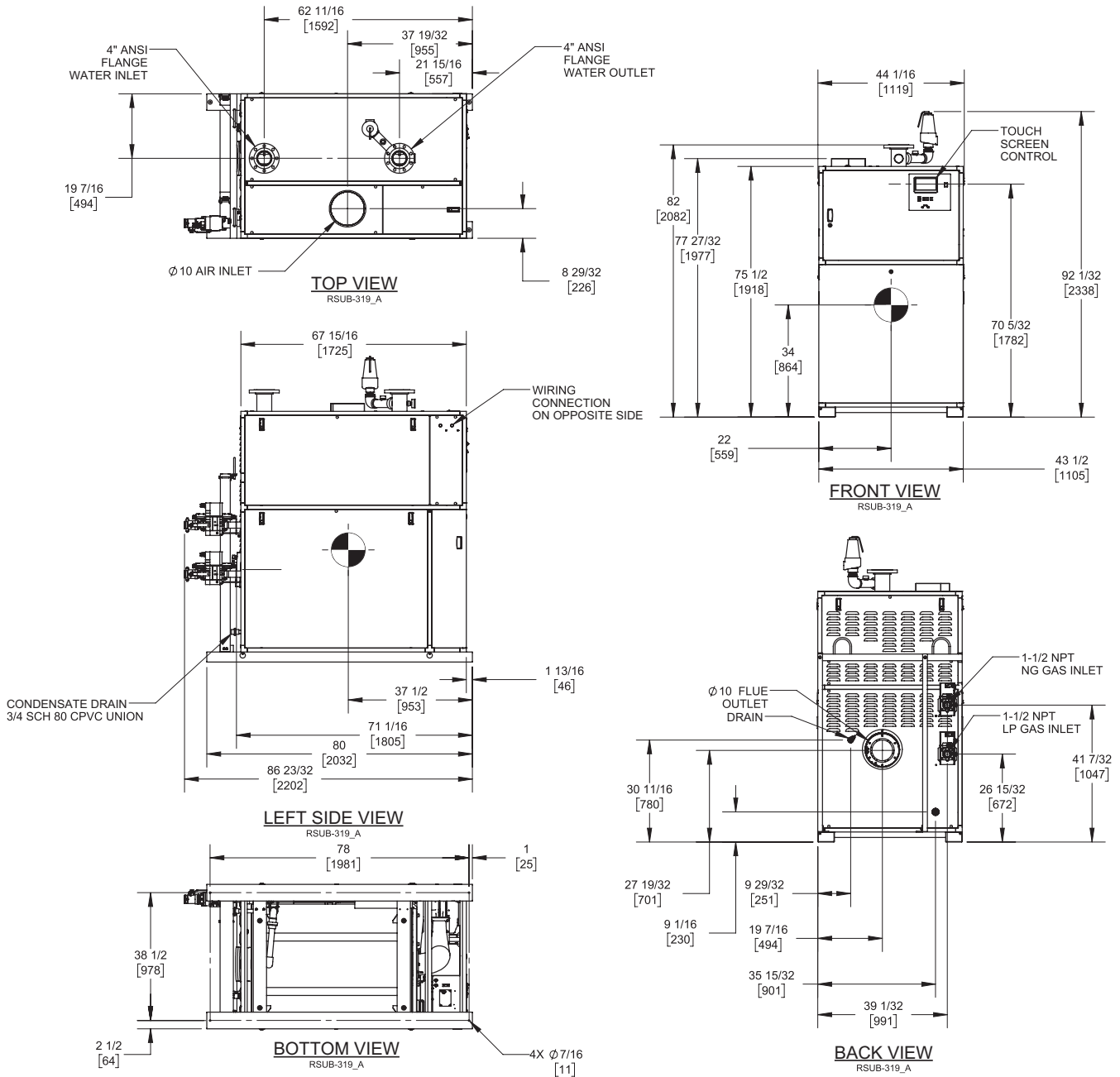
(see Installation and Operation Manual for venting information)

## CODE OPTIONS

CSD-1

FIRMWARE W/REMOTE TEST  
MANUAL RESET LWCO

## DUAL FUEL UNIT



### Notes:

1. Dimensions are approximate and should not be used to "rough-in" equipment.
2. Dimensions are subject to change without notice.
3. All dimensions are in inches (mm).
4. Symbol indicates center of gravity.

## BOILER CERTIFIED RATINGS & CAPACITIES

<b>Fuel Type</b>	Natural/Propane Gas	<b>Boiler FLA</b>	15.05*
<b>Input BTU/hr.</b>	3,000,000 / 879 kW	<b>Boiler HP</b>	87.39
<b>Output BTU/hr.</b>	2,925,000 / 857 kW	<b>Min. Gas Pressure Required</b>	4"W.C.
<b>Electrical Requirements</b>	230 VAC/60 Hz/3PH	<b>Max. Gas Pressure Allowed</b>	14" W.C.
		<b>Operating Weight</b>	2311 lbs / 1048 kg

## BOILER TRIM & CONTROLS

<b>Main Gas Valve</b>	Dungs MBC	<b>Air Switch</b>	Huba
<b>Firing Valve</b>	1 1/2" Apollo	<b>Flow Switch</b>	SIKA
<b>Ignition Control</b>	Fenwal	<b>Blocked Flue Switch</b>	Cleveland NS2
<b>Operating Control</b>	HeatNet®	<b>Blower Motor</b>	Ametek
<b>High Limit</b>	Jumo	<b>L.W.C.O.</b>	800
<b>Main Ball Valve</b>	1 1/2" Apollo	<b>Relief Valve (WB)</b>	1" x 1 1/2" set @ 50 psi
Pump contactor strongly recommended for water heater applications.		<b>Relief Valve (WW)</b>	1 1/2" x 1 1/2" set @ 125 psi

## A.S.M.E.

<b>ASME Sect IV Fire Side</b>	300.69 Sq. Ft. / 27.94 Sq. M.	<b>Design Data</b>	Max. 160 psig & 210°F
<b>Htg Surface</b>		<b>Water Volume</b>	24.9 gal. / 94.3 Liters
<b>ASME Sect IV Water Side</b>	277.23 Sq. Ft. / 25.76 Sq. M.	<b>pH Level</b>	6.5-8.5
<b>Htg Surface</b>			

\* Add circulator amps.

## BOILER TEMPERATURE RISE / PRESSURE DROP (Based on Full Input)

20°F / 11.1°C				30°F / 16.7°C				40°F / 22.2°C				50°F / 27.8°C				60°F / 33.3°C			
Flow Rate		Pressure Drop		Flow Rate		Pressure Drop		Flow Rate		Pressure Drop		Flow Rate		Pressure Drop		Flow Rate		Pressure Drop	
GPM	L/s	Ft	kPa	GPM	L/s	Ft	kPa	GPM	L/s	Ft	kPa	GPM	L/s	Ft	kPa	GPM	L/s	Ft	kPa
292.6	18.5	24.8	74.3	195.1	12.3	11.8	35.3	146.3	9.2	7.9	23.7	117.0	7.4	5.8	17.4	97.5	6.2	4.5	13.5
Flow GPM (Boiler)				Temp. Rise (°F) (Boiler**)				Vent Length (Equiv. Ft.)				Air Inlet Length (Equiv. Ft.)							
Min		Max		Min		Max		Min		Max		Min		Max					
97.5		292.6		20		60		10		160		0		160					

\*\* Min/Max delta t reflects boiler operation at full input. For applications requiring operation above/below these parameters please consult factory.

## WATER HEATER HOURLY RECOVERY CAPACITY (GPH & LPH)

40°F	22°C	60°F	33°C	80°F	44°C	100°F	56°C	120°F	67°C	140°F	78°C
8824	33353	5882	22235	4412	16676	3529	13341	2941	11118	2521	9529

### Water Heater Min Flow Rates

Normal (4 to 12) gpg				Hard (12 to 15) gpg			
Flow Rate		Pressure Drop		Flow Rate		Pressure Drop	
gpm	L/s	Ft	kPa	gpm	L/s	Ft	kPa
239.4	15.1	16.6	49.6	319.2	20.1	19.6	58.6

**REP FIRM** \_\_\_\_\_  
**SUBMITTED BY** \_\_\_\_\_  
**JOB NAME** \_\_\_\_\_  
**ARCHITECT** \_\_\_\_\_  
**ENGINEER** \_\_\_\_\_  
**CONTRACTOR** \_\_\_\_\_  
**DATE** \_\_\_\_\_

## TORUS 3000 VERTICAL

**Category II or Category IV Appliance**  
 (see Installation and Operation Manual for venting information)



A Division of Mestek, Inc.  
 Westfield, MA 01085  
 (413) 564-5515